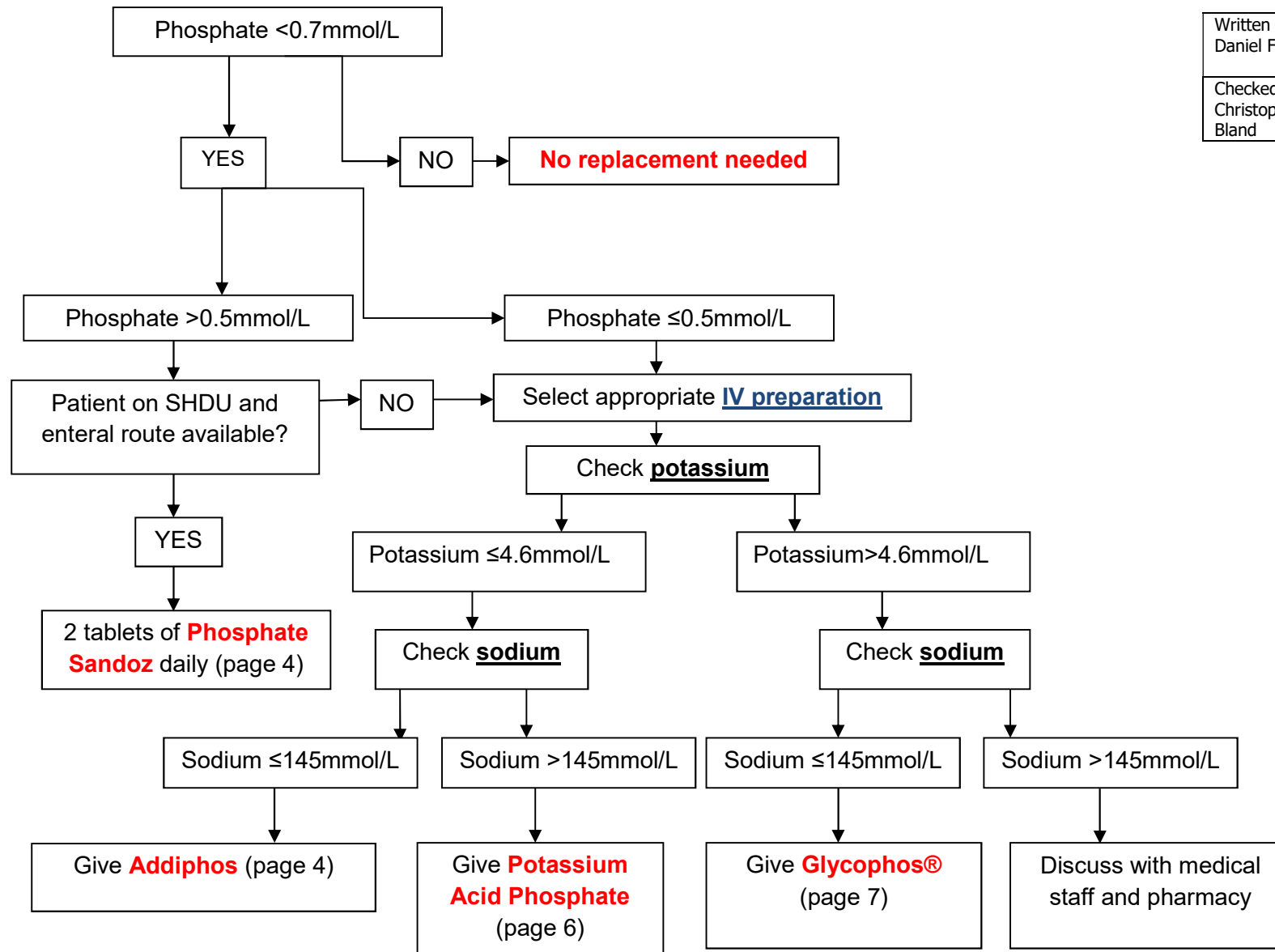


Hypophosphataemia – Choice of Replacement Therapy



Written by: Daniel Fairley	Date written: April 2022
Checked by: Christopher Bland	Review: April 2024

Hypophosphataemia – Glycophos®

20mls Glycophos®
Phosphate 20mmol
Sodium 40mmol

EXCLUSIONS

- No ECG monitoring
- Potassium <4.6mmol/l (see flowchart on page 3)
- Sodium >145mmol/l (see flowchart on page 3)

Dosing and Administration

Route	Preparation	Notes
Peripheral	Add required volume of glycophos to 250ml glucose 5% and give via a volumetric pump over 6 hours	
Central venous	Dilute required volume of glycophos to 100ml of glucose 5% (remove equivalent volume from bag and discard) and give via a volumetric pump over 6 hours	

Phosphate Level	Action	Monitor
>0.7mmol/l	Nil	Every 24 hours unless otherwise directed
Moderate Hypophosphataemia 0.4-0.7mmol/l	Administer 20mmol of phosphate	Check phosphate and corrected calcium in 24 hours
Severe Hypophosphataemia <0.4mmol/l	Inform medical staff and administer 20mmol of phosphate	Check phosphate, corrected calcium, magnesium and potassium in 12 hours

Written by: Daniel Fairley

Date written: April 2022

Checked by: Christopher Bland

Review: April 2024